

BUSHEY Auctions

Catalogue

Catalogue £2

Auction of Antiques, Fine Art, Collectables,
Coins, Clocks, Watches, Jewellery, Silver and Alcohol



Lot 276

Thursday 16th April 2026

Auction starts at 11am

Live Online Bidding

Absentee and Telephone Bids accepted

No Public Attendance on Auction Day

Viewing by Appointment

9th to 15th April

Unit 9 Shakespeare Industrial Estate, Watford. WD24 5RR

www.busheyauctions.com

BID LIVE ONLINE FOR £3
PER AUCTION
easylive**Auction**.com

the-saleroom.com

BUSHEY Auctions

Welcome to Bushey Auctions

We hope you will have an enjoyable time bidding for the fantastic array of antiques, fine art, collectables, jewellery, silver etc from private collections. Please remember when placing your bid, the Buyers premium is 20% + VAT on top of the hammer price.

Please note that any lots purchased via online bidding portals will be subject to an additional commission charge imposed on the hammer price in addition to our basic Buyers Premium.

Please see the individual sites for rates of commission.

Bushey Auctions hold monthly auctions and valuation days; please see the back of the catalogue for forthcoming dates. We are happy to make personal appointments to view items for submission into future sales. We also offer probate and insurance valuations. Our team is always available to help, please don't hesitate to ask any of the team if you need assistance. The information below will help you enjoy the event; it sets out how the auction works.

CONDITIONS OF SALE

VIEWING (BY APPOINTMENT ONLY for 7 days before auction date)

The catalogue contains a Lot no, Description and Estimate for each lot. The description is for guidance only and as some items are of an age or nature that means they may not be in perfect condition, we advise you to examine the lots yourself before the auction starts. Please take care when handling items, all breakages and damage will be charged for. Viewing times are shown on the front of the catalogue. All items are offered for sale as viewed and are sold as seen. The auctioneer does not take responsibility for authenticity, origin or estimated price. All items are sold without any warranty or claim as to its suitability or fitness for its apparent purpose so as a prospective Buyer, you should use your judgement. The wording A/F within the description is an indication that the lot may not be in good condition. All electrical items are sold on the express condition that the winner ensures they are examined by a competent electrician before connecting them to any source of electricity.

Condition Reports will be supplied until 4 p.m. the day before auction day.

All sales are final and no refunds are given.

RESERVE PRICES

Some items have a reserve price. Where necessary, the Auctioneer will protect the reserve on an item and use his discretion up to 10%. If this price is not reached, the Auctioneer will record the item as unsold and move on to the next item.

THE BUYER

The highest bidder as determined by the Auctioneer is the Buyer. The Auctioneer has absolute discretion to settle any dispute that may arise and to refuse bids or to advance the bidding as seen fit. His decision is final. These terms and conditions also apply to after-sale bids, timed auction bids and private treaty sales.

In cases of dispute these Conditions of Sale are governed by UK jurisdiction under English Law.

THE BUYER'S PREMIUM

This is the commission paid to the auctioneer by the Buyer over and above the highest bid value (often referred to as the Hammer Price) of each item. **OUR BUYER'S PREMIUM IS 20% + VAT (total 24%). So if you are the highest bidder on an item with a £100 bid, the total cost to you is £124. Please take this into account when bidding.**

Please see the individual sites for rates of commission.

Please note that any lots purchased via online bidding portals will be subject to an additional commission charge imposed on the hammer price in addition to our basic Buyers Premium. Certain works by living artists or artists deceased within the last 70 years will incur an Artist's Resale Right royalty charge when sold with a hammer price of £1000 or more.

ONLINE BIDDING

We offer online bidding services via www.easyliveauction.com and www.the-saleroom.com

Please note that any lots purchased via online bidding portals will be subject to an additional commission charge imposed on the hammer price in addition to our basic Buyers Premium.

Please see the individual sites for rates of commission.

Payment must be made within 48 hours, by debit card or bank transfer, collection is by appointment only from our Watford showroom. Unless by prior arrangement, storage charges of £5 per item per day will be incurred thereafter. If payment is not received a week after the auction date, the bidder's account will be blocked on all internet bidding sites (the comments are available to all auctioneers).

PAYMENT

You are welcome to pay by cash, cheque, electronic bank transfer or debit card. Credit cards will only be accepted up to the value of £500. A 3% surcharge will apply to Business debit/credit cards and International debit/credit cards. We reserve the right to hold items paid for by cheque until the cheque has cleared.

Please note, once the Auctioneer has determined yours to be the winning bid, a legal contract is created and you are responsible for and obliged to pay for the item(s). If full payment is not received within two weeks after the auction date Bushey Auctions reserve the right to hand the bidder's account over to our debt collection agency. In the event your account is passed for recovery please be advised you will be responsible for all additional costs which will include but not limited to debt recovery costs, legal costs, interest and storage charges. This will affect your bidder status at Bushey Auctions and any other auction houses as well as internet bidding sites and should the matter proceed through the courts this may affect your credit status. Bushey Auctions reserve the right to cancel the sale and re-sell the item(s) won and can also proceed against the Buyer for breach of contract. Any deposits or part payments shall be forfeited and the defaulter shall make good any loss arising from the resale, together with the charges and expenses in respect to both sales. So please only bid up to the amount you are prepared to pay and make sure you allow for the Buyer's Premium and VAT

Items that have been paid for not collected 3 months after the auction date will be sold by Bushey Auctions, the proceeds to defray storage charges.

IF YOU CAN'T MAKE THE AUCTION, WE CAN BID FOR YOU

If you would like to bid for an item, we are happy to bid on your behalf. Please request a form by email or complete the Absentee/Commission bidding form found on our website stating the maximum you are prepared to bid (minimum bid £20). You can also bid over the telephone for lots estimated over £50. The form to book a telephone line is also found on our website.

All forms must be received by 4 p.m. the day before auction day. Please note that acceptance is not guaranteed. We require debit or credit card details for all absentee/commission/telephone bids as security for your bid and may require a deposit of 50% of your maximum bid. We will then bid for you up to your maximum, attempting to secure the item at the lowest required to beat all other bids. We will contact you if you are the winning bidder for the lot(s) and will arrange payment and collection with you. Payment must be made within 48 hours and we reserve the right to charge the card given in full payment including all fees. Unless by prior arrangement, storage charges of £5 per item per day will be incurred thereafter.

| Lot No. | Description | Estimate |
|---|--|-----------|
| Furniture, Mirror & Lighting | | |
| 1 | An early 20th century oak Globe Wernicke of three glazed sections, base plinth and top cover, 115 x 87 x 29cm | £100-£150 |
| 2 | Georgian mahogany drop flap oval gate leg dining table on four pad feet, 71 x 141 x 160cm | £250-£350 |
| 3 | An 18th century mahogany pad foot oval drop leaf table circa 1760, 73 x 109 x 115cm | £100-£150 |
| 4 | An early 20th century rectangular mahogany games table with green baize, all on four turned tapering legs, 78 x 83.5 x 42cm | £50-£80 |
| 5 | A Victorian rounded rectangular mahogany games table with green baize, all on quatrefoil support, 74.5 x 91.5 x 45.5cm | £50-£80 |
| 6 | An early 20th century rectangular mahogany pedestal desk with tooled inlaid leather top, seven drawers with brass handles on bracket feet, 78 x 123.5 x 62cm | £50-£80 |
| 7 | A pair of rectangular mahogany two tier side tables with original castors, 59 x 46.5 x 36.5cm each | £60-£90 |
| 8 | A mahogany rectangular serpentine fronted chest of drawers with brass handles, 100 x 49 x 37cm | £50-£80 |
| 9 | An Indian mahogany carved wooden tea table in the form of leaves and lily pads on four section support, 46 x 44 x 43cm | £40-£60 |
| 10 | An Edwardian rectangular music Canterbury of customary form with single drawer with brass handles on original castors, 53 x 56 x 35.5cm | £50-£80 |
| 11 | A Chinese hardwood circular side table on four carved supports, 51 x 36cm | £70-£100 |
| 12 | A pair of rectangular hardwood glazed oriental wall mounted display cabinets, to include keys, 94 x 51 x 10cm | £120-£180 |
| 13 | A William and Mary ebonised fruitwood and marquetry torchere on three outswept legs, circa 1690, 94cm (h) A/F | £200-£300 |
| 14 | A pair of Edwardian mahogany and satinwood inlaid upholstered revolving tub chairs with scroll pierced backs on four tapering rectangular feet with original castors | £500-£800 |
| 15 | An upholstered leather armchair on cabriole legs | £50-£80 |
| 16 | A set of four mahogany dining chairs with upholstered seats | £100-£150 |
| 17 | An oak Artists miniature folding chair with ladder back, 61.5 x 26 x 38cm | £30-£50 |

| Lot No. | Description | Estimate |
|---------|--|-----------|
| 18 | A rectangular gilt wooden wall mirror with bevelled edge, 65 x 55cm | £50-£80 |
| 19 | An Art Deco ceiling pink glass plafonnier with suspensory chain and ceiling rose, 58cm (d) | £100-£150 |
| 20 | A pair of brass knopped stem table lampstands on raised circular bases, each 38cm (h) | £50-£80 |
| 21 | A brass Corinthian column table lamp on raised stepped square base, to include shade, 45cm (h) | £30-£50 |

Fine Art

| | | |
|----|---|-----------|
| 22 | Beryl Cook framed and glazed polychromatic lithograph titled Bus Stop, limited edition 182/650, signed bottom right, to include COA, 42 x 52.5cm | £120-£180 |
| 23 | Beryl Cook framed and glazed polychromatic lithograph titled Ladies Who Lunch, limited edition 209/650, signed bottom right, to include COA, 43 x 45.5cm | £100-£150 |
| 24 | Beryl Cook framed and glazed polychromatic lithograph titled A Full House, limited edition 354/650, signed bottom right, to include COA, 43 x 47cm | £100-£150 |
| 25 | Beryl Cook framed and glazed polychromatic limited edition lithograph, signed bottom right numbered 19/650 bottom left, 48.5 x 30cm | £50-£80 |
| 26 | Ilana Richardson framed and glazed limited edition polychromatic lithographic print, 25/275 titled The Courtyard, signed bottom right, numbered bottom left to include COA, 78 x 56cm | £40-£60 |
| 27 | Jeremy King framed and glazed polychromatic lithographic print titled Tower of London, signed bottom right, numbered bottom left 149/250 to include COA, 40 x 61cm | £30-£50 |
| 28 | David Gentleman framed and glazed limited edition polychromatic lithograph 59/120, Seven Dials Covent Garden London, signed bottom right numbered bottom left, 43.5 x 65.5cm | £40-£60 |
| 29 | Ira Moscovitz framed and glazed limited edition polychromatic lithographic print 26/150 of a Bride and Groom, signed bottom right numbered bottom left, 60.5 x 50cm | £60-£90 |

| Lot No. | Description | Estimate |
|---------|---|-------------|
| 30 | Pablo Picasso framed and glazed monochromatic limited edition lithograph 453/500 titled Cavalier en Armure, signed bottom right by Marina Picasso, blind stamped and numbered bottom left dated 1981 to include COA to verso, 40 x 51cm | £1000-£1500 |
| 31 | Huvy (Ahuva Elisha) framed polychromatic multi media image of The Wailing Wall Jerusalem titled Sucot at The Kotel, signed bottom right, 78 x 96cm | £180-£280 |
| 32 | Pierre Boncompain textured print on canvas titled Le Blue Jeans, signed bottom right, details to verso, 60 x 80.5cm | £70-£100 |
| 33 | Brian Perrin framed and glazed monochromatic lithographic print AP titled The Gap in the Trees, signed bottom right, 55 x 42.5cm | £30-£50 |
| 34 | A pair of antique oval framed and glazed Bartolozzi engravings with angels and putti titled History and Sculpture by Capriana, frames 24 x 19.5cm and two engravings of putti in circular wooden frames 30cm (d) (4) | £40-£60 |



Lot 30

| Lot No. | Description | Estimate |
|----------------|---|-----------------|
| 35 | Sylvia Packard framed and glazed pencil drawing of Mother and Baby circa 1910, details to verso, 18.5x 13cm | £40-£60 |
| 36 | Attributed to Gerbrant Van den Eeckhout 18th century red chalk on paper drawing of a young nobleman, details to verso, 32 x 22.5cm | £200-£300 |
| 37 | Ann Mumford framed and glazed watercolour titled The Posy, signed bottom left, gallery label and artist signature to verso, 47.5 x 31.5cm | £40-£60 |
| 38 | Abraham II Hulk a pair of framed and glazed watercolours of sailing boats, signed bottom left, 22 x 40cm each | £30-£50 |
| 39 | Sir Hugh Casson framed and glazed watercolour titled The Honeymoon Suez Canal en route Bombay, monogrammed bottom right, gallery label to verso, 9.5 x 13cm | £50-£80 |
| 40 | Cecil Rochford D'Oyly-John framed oil on canvas of a Mediterranean Square, signed bottom right, 51 x 76.5cm, ARR applies | £400-£600 |
| 41 | Rex Vicat Cole framed oil on canvas of a lake and trees, signed bottom left, 61.5 x 91.5cm | £300-£500 |
| 42 | Ken Moroney framed oil on panel of a figure in a wood titled Fairy Wood, signed bottom left, 26.5 x 34.5cm, ARR applies | £150-£200 |
| 43 | William Manners RBA framed oil on panel titled Cornfield with Figures, signed bottom left, 25.5 x 36cm | £180-£280 |
| 44 | Ben Levene RA framed oil on panel of an industrial scene, details to verso, 23 x 35.5cm, ARR applies | £300-£500 |
| 45 | Anke Peterson framed oil on canvas titled Topper av nadd (Top is Reached) signed bottom right, 92.5 x 76cm | £100-£150 |
| 46 | Britta de la Cour framed oil on canvas still life of flowers, signed top right, 90 x 60.5cm | £100-£150 |
| 47 | Inge Sachs framed oil on panel floral abstract, signed bottom left, 60.5 x 50cm | £50-£80 |
| 48 | Max Schwab framed oil on canvas Entrance to The Bull Ring, monogrammed bottom right, dated bottom left, 49.5 x 39cm | £30-£50 |
| 49 | Brian Jull framed oil on canvas of figures in a park, signed bottom right, details to verso, 51 x 61cm | £70-£100 |
| 50 | Laura Bofill framed mixed media titled Companero de Vida, 90 x 90cm, ARR applies | £200-£300 |

| Lot No. | Description | Estimate |
|------------------|--|-----------|
| Porcelain | | |
| 51 | Minton Barchester dinner, tea and coffee service for twelve place settings to include plates, bowls, cups, saucers, vegetable dish, platter, coffee pot, teapot, cream jug, sauce boat and stand (115) | £300-£500 |
| 52 | Royal Worcester Golden Anniversary dinner, tea and coffee service to include, plates, bowls, cups, saucers, teapot, cream jug, sugar bowl, oval meat platters, sauce boat and stand (121) | £250-£350 |
| 53 | Royal Albert Old Country Roses dinner service to include plates, bowls, a teapot, cake plates, platters, serving dishes and sauce boats (76) | £150-£200 |
| 54 | Booths Floradora dinner, tea and coffee service for twelve place settings to include plates, bowls, cups, saucers, coffee pot, teapot, serving dishes, sauce boat and platters (176) | £150-£200 |
| 55 | Spode Montine Rose eight place setting dinner service to include plates, bowls, serving dishes, platters and a sauce boat (47) | £180-£280 |
| 56 | Aynsley Cottage Garden dinner and tea service to include plates, bowls, cups, saucers, teapot, cream jug, sugar bowl, sauce boat and stand (49) | £70-£100 |
| 57 | Royal Doulton Belvedere part dinner and coffee service to include plates, bowls, cups, saucers, milk and cream jugs (60) | £60-£90 |
| 58 | Aynsley dinner service white ground with blue and gold border for twelve place settings to include plates, bowls, a platter and a sauce boat and stand (50) | £40-£60 |
| 59 | Wedgwood Beaconsfield teaset for twelve place settings to include a teapot, cream jug, sugar bowl, cups, saucers and plates, marks to the bases (40) | £70-£100 |
| 60 | Wedgwood Ashford teaset for six place settings to include a teapot, cream jug, sugar bowl, cake plate, cups, saucers and plates, marks to the bases (22) | £40-£60 |
| 61 | Paragon tea service to include ten cups and twelve saucers, marks to the bases (22) | £50-£80 |
| 62 | Royal Albert Brigadoon tea service to include cups, saucers, plates, a milk jug, sugar bowl, cake plates, biscuit plates and bonbon dishes (63) | £70-£100 |
| 63 | Royal Albert Old Country Roses teaset for six place settings to include plates, cups and saucers (21) | £60-£90 |

| Lot No. | Description | Estimate |
|----------------|---|-----------------|
| 64 | Shelley teaset for six place settings to include cups, saucers, plates, milk jug and sugar bowl (20) | £100-£150 |
| 65 | Meissen coffee set for two to include a coffee pot, cream jug, sugar bowl and two cups and saucers (7) | £150-£200 |
| 66 | Meissen early 20th century bowl decorated with flowers, leaves and gilded border, marks to the base, 30.5cm (d) | £100-£150 |
| 67 | Meissen early 20th century bowl decorated with gilded flowers and leaves, marks to the base, 28.5cm (d) | £120-£180 |
| 68 | Meissen early 20th century bowl decorated with flowers, leaves and gilded border, marks to the base, 28cm (d) | £100-£150 |
| 69 | A Sevres two handled oval bowl and cover decorated with flowers, gilding and a butterfly, fruits and flowers finial, marks to the base, 12.5 x 17 x 10.5cm | £40-£60 |
| 70 | A Dresden inkstand, the inkwell with domed hinged cover decorated throughout with floral sprays 22 x 19cm and a Meissen plate decorated with figures, flowers and leaves 16.5cm (d), marks to the bases | £30-£50 |
| 71 | Royal Crown Derby Imari pattern 1128 table bell 13.5cm (h) and a rectangular bonbon dish | £50-£80 |
| 72 | Doulton Slatters early 20th century cauldron on three supports with three angled handles, 14 x 16cm | £50-£80 |
| 73 | Clarice Cliff Fantasia hand painted bowl, marks to the base, 16.8cm (d) | £100-£150 |
| 74 | A quantity of continental porcelain to include vases, a plate and an oval dish decorated with birds, flowers, leaves and landscapes, tallest 32cm (h) (5) | £100-£150 |
| 75 | A pair of Belleck vases of ovoid form decorated with leaves to the sides, marks to the bases, 32.5cm (h) | £30-£50 |
| 76 | Six Saddlers Classic Collection teapots to include The Battle of Trafalgar, The Battle of Waterloo, The Spanish Armada, Tower of London and Henry VIII, marks to the bases, 16cm (h) | £80-£120 |
| 77 | Six Saddlers Classic Collection teapots to include English Country House, William Shakespeare, Horseguards, Queen Mary and Sporting Scenes, marks to the bases, 17.5cm (h) | £60-£90 |
| 78 | Hermes Mosaique au 24 gold collection porcelain to include a cased set of two cups and saucers, two square plates and a circular platter all in original packaging (5) | £150-£200 |

| Lot No. | Description | Estimate |
|----------------|---|-----------------|
| 79 | A pair of Gucci porcelain coffee mugs and covers by Richard Ginori 1735, both in original packaging | £80-£120 |
| 80 | A pair of Gucci porcelain black and white floral oval dishes with applied beetle figurines by Richard Ginori 1735, both in original packaging | £40-£60 |
| 81 | Gucci scented candle by Richard Ginori 1735 in a porcelain holder with pull off cover, in original packaging | £50-£80 |
| 82 | Two circular Gucci metal and enamel trays decorated with tigers in original packaging, each 28cm (d) (2) | £120-£180 |
| 83 | Gucci blue star and pink star metal and enamel trays in original packaging, each 33cm (d) (2) | £120-£180 |
| 84 | Galluba and Hofmann porcelain figural group of ladies and a gentleman in 18th century costume at a tea table, marks to the base, 21 x 17 x 17cm, A/F | £100-£150 |
| 85 | Herend figurines to include rabbits, an owl, a cockerel A/F and a circular pierced pot pourri holder with pull off cover, marks to the bases, tallest 13.5cm (h) | £80-£120 |
| 86 | Six Lladro figurines of children in nightgowns, marks to the bases, tallest 22cm (h) | £40-£60 |
| 87 | A pair of Bretby ceramic cats design number 1518 circa 1930s, marks to the bases, each 12 x 14 x 10cm | £50-£80 |
| 88 | Royal Worcester figural group of a Sparrowhawk and Bullfinch (Accifiter Nisus and Pyrrhula Pyrrhula) limited edition 14/250, modelled by James Alder, to include wooden stand and COA, 56.5cm (h) | £80-£120 |
| 89 | Royal Worcester figurine of a Moorhen Chick and Water Lily, limited edition 91/500, modelled by Dorothy Doughty, to include COA, 11 x 31cm | £50-£80 |
| 90 | Royal Worcester figurine of a Snow Bunting (Plectrophenax Nivalis) limited edition 99/500, modelled by James Alder, to include wooden stand and COA, 18cm (h) | £30-£50 |
| 91 | Royal Worcester figurine of a Dartford Warbler (Sylvia Undata) limited edition 47/500, modelled by James Alder, to include wooden stand and COA, 22cm (h) | £30-£50 |
| 92 | Royal Worcester figurine of a Shore Lark (Eremophila Alpestris) limited edition 83/500, modelled by James Alder, to include wooden stand and COA, 15cm (h) | £30-£50 |

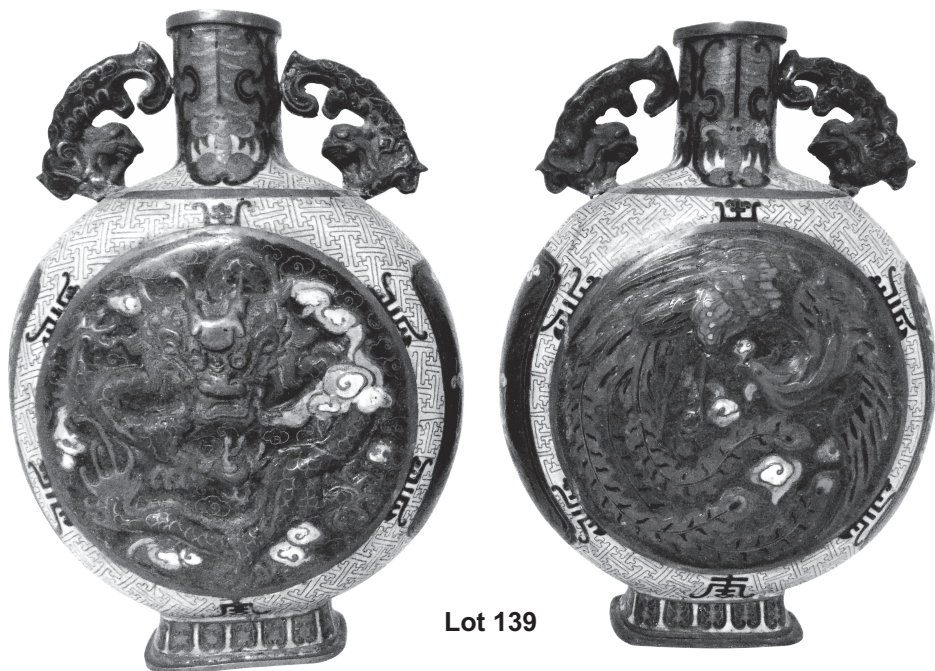
| Lot No. | Description | Estimate |
|---------|--|----------|
| 93 | Royal Worcester figurine of a Robin (<i>Erithacus Rubecula</i>) limited edition 35/250, modelled by James Alder, to include COA, 18cm (h) | £40-£60 |
| 94 | Royal Worcester figurine of a Little Owl (<i>Athene Noctura</i>) limited edition 51/250, modelled by James Alder, to include COA, 18cm (h) | £50-£80 |
| 95 | Royal Worcester figurine of a Nightingale and Honeysuckle, limited edition 394/500, modelled by Dorothy Doughty, to include wooden stand and COA, 26.5cm (h) | £50-£80 |
| 96 | Royal Worcester figurine of a Wall Creeper (<i>Tichodroma Muraria</i>) limited edition 56/500, modelled by James Alder, to include wooden stand and COA, 21cm (h) | £40-£60 |
| 97 | Royal Worcester figurine of a Blue Tit (<i>Parus Caeruleus</i>) limited edition 54/250, modelled by James Alder, to include COA, 19cm (h) | £30-£50 |
| 98 | Royal Worcester figurine of a Wood Warbler (<i>Phylloscopus Sibilatrix</i>) limited edition 17/250, modelled by James Alder, to include COA, 18cm (h) | £30-£50 |
| 99 | Royal Worcester figurine of a Greenfinch (<i>Carduelis Chloris</i>) limited edition 12/250, modelled by James Alder, to include COA, 17cm (h) | £30-£50 |
| 100 | Royal Worcester figurine of a Bearded Reedling (<i>Panurus Biarmicus</i>) limited edition 113/500, modelled by James Alder, to include wooden stand and COA, 28cm (h) | £40-£60 |
| 101 | Royal Worcester figurine of a Dipper (<i>Cinclus Cinclus</i>) limited edition 10/500, modelled by James Alder, to include wooden stand and COA, 23.5cm (h) | £50-£80 |
| 102 | Two Royal Worcester figurines of a Goldcrest and Larch (Hen and Cock) limited editions 106/500, modelled by Dorothy Doughty, to include wooden stands and COAs, 22cm (h) | £60-£90 |

Glass

| | | |
|-----|--|-----------|
| 103 | A pair of ruby glass lustres of customary form, 34cm (h) | £120-£180 |
| 104 | A cut glass lustre of customary form on raised circular base, 14.5 cm (h) | £30-£50 |
| 105 | Simon Moore Art Glass vase, tapering cylindrical, blue to green with abstract pattern central band, signed to the base, 29cm (h) | £120-£180 |

| Lot No. | Description | Estimate |
|----------------|---|-----------------|
| 106 | Whitefriars tangerine vase, tapering cylindrical with abstract decoration to the sides, 22cm (h) | £100-£150 |
| 107 | A continental white overlaid on ruby glass campana form vase decorated with floral sprays, 24cm (h) | £30-£50 |
| 108 | A two bottle condiment set with blue glass bottles and drop stoppers in a silver plated stand with central carrying handle all on four scroll feet, 26.5cm (h) | £40-£60 |
| 109 | Villeroy and Boch faceted crystal candelabra with drop lustres and a pair of matching candlesticks, signed to the bases, tallest 43.5cm | £80-£120 |
| 110 | Rosenthal Versace Medusa glass bottle stopper with green glass figural finial, signed to the side with original packaging, 13cm (l) | £40-£60 |
| 111 | A quantity of cut glass to include six brandy goblets and six champagne glasses (12) | £60-£90 |
| 112 | Festival of Britain 1951 a set of six shot/liquor glasses of beaker form with gilded decoration (6) | £30-£50 |
| 113 | Lalique Flacon Collection eau de parfum limited edition 2012 Silage in sealed frosted crystal parfum bottle, signed to the base, to include COA A405 and original packaging | £150-£200 |
| 114 | Lalique Flacon Collection eau de parfum limited edition 2013 Libellule in sealed crystal stopper parfum bottle, signed to the base, to include COA A449 and original packaging | £150-£200 |
| 115 | Lalique Flacon Collection eau de parfum limited edition 2015 Plume in sealed crystal stopper parfum bottle, signed to the base, to include COA A045 and original packaging | £150-£200 |
| 116 | A quantity of glass to include ten perfume bottles of various size, shape and style, a dressing table jar and a paperweight (12) | £100-£150 |
| 117 | Seven Murano scent bottles and stoppers of various shape and style, tallest 7cm (h) | £30-£50 |
| 118 | Swarovski Crystal Magic of Dance Anna 2004, designed by Anton Hirzinger to represent the famous ballerina Anna Pavlova in clear and yellow crystal, to include original packaging and COA, 18.5cm (h) | £70-£100 |
| 119 | Swarovski Crystal Wonders of The Sea Harmony, designed by Martin Zendron to include original packaging and COA, 17,5cm (h) | £80-£120 |

| Lot No. | Description | Estimate |
|---------|--|-----------|
| 120 | Swarovski Crystal Planet Vision 2000, designed by Anton Hirzinger to include original packaging and COA, 12cm (h) | £30-£50 |
| 121 | Swarovski Crystal Masquerade Pierrot 1999, designed by Adi Stocker to include original packaging, stand, plaque and COA, 20cm (h) | £60-£90 |
| 122 | Swarovski Crystal Masquerade Columbine 2000, designed by Gabriele Stamey to, include original packaging, stand, plaque and COA, 17cm (h) | £60-£90 |
| 123 | Swarovski Crystal Masquerade Harlequin 2001, designed by Anton Hirzinger to include original packaging, stand, plaque and COA, 13cm (h) | £60-£90 |
| 124 | A quantity of Swarovski Crystal to include a sailing ship, animal and bird figurines, all in original packaging with COAs (6) | £60-£90 |
| 125 | A quantity of Swarovski Crystal all in original packaging some with COAs (11) | £100-£150 |



Lot 139

| Lot No. | Description | Estimate |
|---|--|-----------|
| Oriental Porcelain & Colletables | | |
| 126 | A pair of Chinese baluster vases decorated with horses in a landscape, character marks to the bases, 55.5cm (h) | £300-£500 |
| 127 | A Chinese rectangular blue and white porcelain trinket box and cover decorated with a landscape, six character marks to the base, 5.5 x 9.5 x 6.5cm | £40-£60 |
| 128 | A Chinese miniature blue and white porcelain baluster vase decorated with a dragon chasing a flaming pearl, six character mark to the base, 13cm (h) | £30-£50 |
| 129 | A Chinese blue and white porcelain teapot with metal handle, cover and spout, 13x 14cm | £40-£60 |
| 130 | A Chinese octagonal blue and white box with pull off cover decorated with a dragon, character marks to the base, 5 x 7cm | £30-£50 |
| 131 | An oriental blue and white porcelain cup and saucer for the export market, marks to the base | £30-£50 |
| 132 | A Chinese blue and white charger decorated with trees in a landscape, 37cm (d) | £30-£50 |
| 133 | A pair of Imari pattern chargers decorated with exterior scenes, 37cm (w) | £40-£60 |
| 134 | A Japanese Meiji period Satsuma vase decorated with figures and gilding on a cobalt blue ground, marks to the base, 17.5cm (h) | £60-£90 |
| 135 | A Japanese crackle glazed Meiji period style Satsuma teapot, handle A/F, 24 x 18.5cm | £40-£60 |
| 136 | A Chinese Yixing style unglazed teapot with stylised bamboo sides, handle, spout and Chinese characters, 18 x 17 x 9.5cm | £50-£80 |
| 137 | A circular cinnabar lacquer ginger jar and cover, 11cm (h) | £30-£50 |
| 138 | Qing Dynasty Canton rectangular enamelled box decorated with floral sprays and domed hinged cover, 7.5 x 11 x 7.5cm | £100-£150 |
| 139 | A pair of 19th century Chinese cloisonné moon flasks decorated with dragons to the sides and beasts of burden side handles, marks to the bases, 38cm (h) | £300-£500 |
| 140 | A Chinese cloisonné baluster vase decorated with polychromatic shields, elephant mask side handles and applied roundels, 38.5cm (h) | £200-£300 |
| 141 | A Chinese cloisonné and copper incense burner decorated with a dragon mask and beast shaped side handles, the pull off cover with beast of burden finial, 49cm (h) | £250-£350 |

| Lot No. | Description | Estimate |
|---------|---|-----------|
| 142 | A Chinese cloisonné ovoid vase decorated with birds, flowers and leaves, 25cm (h) | £80-£120 |
| 143 | A Chinese cloisonné censer decorated with floral motifs and applied elephant mask side handles, 13.5 x 23.5cm | £100-£150 |
| 144 | A Chinese cloisonné baluster vase decorated with flowers, butterflies and birds, 26cm (h) | £70-£100 |
| 145 | A pair of Chinese 19th century cloisonné ewers with pull off covers decorated with birds, scroll motifs and stylised animal handles, 31.5cm (h) | £250-£350 |
| 146 | An early 20th century Chinese cloisonné oil lamp of ribbed cylindrical section decorated with motifs and dragons and a clear glass shade within a metal gallery, 15cm (h) | £50-£80 |



Lot 155

| Lot No. | Description | Estimate |
|----------------|--|-----------------|
| 147 | A Chinese circular cloisonné cricket cage with applied miniature figurines of animals and a suspensory hook, marks to the base 14.5 x 9cm | £50-£80 |
| 148 | A Chinese rectangular cloisonné cricket cage with suspensory hook, marks to the base, 9 x 7 x 6cm | £30-£50 |
| 149 | A Chinese rectangular cloisonné cricket cage with suspensory hook, marks to the base, 10 x 6.5 x 4cm | £30-£50 |
| 150 | An oriental cloisonné match box holder decorated with a stylised dragon, 12.5 x 12cm | £30-£50 |
| 151 | A Chinese cloisonné and white metal calligraphy brush, 60cm (l) | £50-£80 |
| 152 | A Chinese cloisonné and white metal figurine of Guan Yin on a stylised cloisonné and white metal detachable base, 88cm (h) | £280-£380 |
| 153 | A Chinese cloisonné and white metal figurine of Guan Yin, 61.5cm (h) | £150-£200 |
| 154 | A Chinese 19th century bronze figurine of a lady carrying a teapot and a hoe, signed to the base, 25cm (h) | £30-£50 |
| 155 | An oriental bronze figurine of a Tang Horse on raised rectangular wooden plinth, 24 x 27 x 10.5cm, horse 21 x 27 x 10.5cm | £80-£120 |
| 156 | A pair of oriental ceramic garden seats in the form of elephants on raised rectangular bases, each 55.5 x 49 x 23cm | £120-£180 |
| 157 | A quantity of jadeite and green hard stone figurines to include Dogs of Foe, Horses and carved hardwood stands (15) | £100-£150 |
| 158 | A Chinese bronze teapot of globular form with stylised dragon handle and mask spout, the pull off cover with stylised beast finial, marks to the base, 10.5 x 11cm | £70-£100 |
| 159 | A Chinese bronze pot pourri holder with applied masks, birds and leaves, signed to the base, to include hardwood stand, 7.5 x 15cm | £50-£80 |
| 160 | A pair of Indian Bidriware waisted vases decorated with birds, flowers and leaves, 14.5cm (h) | £60-£90 |
| 161 | An Indian Bidriware rectangular trinket box with hinged cover, 5 x 12 x 8cm | £60-£90 |
| 162 | A Chinese late 19th century reverse painted snuff bottle decorated with figures in a landscape, 6.5cm (h) | £80-£120 |
| 163 | A Chinese late 19th century reverse painted snuff bottle decorated with figures in a landscape, 6.5cm (h) | £80-£120 |
| 164 | A Chinese hand carved erotic snuff bottle, 6.5cm (h) | £70-£100 |

| Lot No. | Description | Estimate |
|---------------------|--|-----------|
| Collectables | | |
| 165 | A mid 20th century frosted glass vase mounted in a metal rod and rope twist floor stand, 151.5cm (h) | £80-£120 |
| 166 | A cylindrical brass coal scuttle with ring side handles on three scroll supports, the domed pull off cover with urn finial, 39 x 30cm | £30-£50 |
| 167 | A Russian cast iron ebonised Horse and Foal figural group, indistinctly signed to the base, 30.5 x 34 x 26cm | £400-£600 |
| 168 | A bronze figurine of a lady reading a love letter on raised circular base, 33.5cm (h) | £40-£60 |
| 169 | Georges Maxim a pair of spelter figurines titled Maraudeur and Sons Souci, 37cm (h) | £40-£60 |
| 170 | A pair of 19th century bronze cupids, one with tambourine the other with triangle, both on circular naturalistic bases, 22.5cm (h) A/F | £40-£60 |
| 171 | A cast metal doorstop in the form of a Ram, 18 x 24 x 5.5cm | £30-£50 |
| 172 | Rolls Royce Spirit of Ecstasy car radiator cap 11cm (h) and a Rolls Royce hub cap 42.5cm (d) | £150-£200 |



Lot 178

| Lot No. | Description | Estimate |
|----------------|--|-----------------|
| 173 | Pitco Glass Owl night light with carrying handle, 14cm (h) | £40-£60 |
| 174 | Roman circa 100BC bronze oil lamp, triple wick with pull off cover and mouse finial. 6.5cm (h) | £100-£150 |
| 175 | Roman-Egyptian circa 100BC bronze oil lamp with pull off cover, bird finial, 7.5cm (h) | £100-£150 |
| 176 | Two 19th century salt glazed stoneware spirit barrels for Port 33.5cm (h) and Ale 31cm (h) | £40-£60 |
| 177 | E W Usher vintage Medieval Castle chalkware wall plaque, 30.5cm (d) A/F | £30-£50 |
| 178 | John Spielman wood sculpture titled Loop on raised rectangular plinth, 37cm (h) | £120-£180 |
| 179 | Karin Janzen bronzed resin figurine of a child with a doll, monogrammed to base, 17 x 12.5 x 8cm | £40-£60 |
| 180 | Three framed oval miniatures of figures in 18th century costume, 8 x 6cm each | £30-£50 |
| 181 | A Victorian framed and glazed taxidermy of a pheasant in a naturalistic setting, 53 x 49 x 23cm | £200-£300 |
| 182 | Mont Blanc Meiserstruck No. 142 with 18ct gold nib in original case, to include empty ink bottle | £250-£350 |
| 183 | Sheaffer fountain pen with 14ct gold nib in original case | £40-£60 |
| 184 | Dunhill gold plated ball point pen and roller ball pen, a Sheaffer fountain pen and a hallmarked silver roller ball pen (4) | £100-£150 |
| 185 | A quantity of collectables to include eight antique hallmarked silver and Mother of Pearl fruit knives, button hooks, a shoe horn, writing instruments and whistles (21) | £80-£120 |
| 186 | Two wooden walking sticks with white metal finials and a shooting stick | £60-£90 |
| 187 | Three vintage parasols to include one with a carved dog handle, a tigers eye ball handle and carved painted handle | £30-£50 |
| 188 | Gucci mid 20th century crocodile skin ladies handbag, | £120-£180 |
| 189 | Ruddal Carte and Co. Bohemian Flute in original fitted case, | £500-£800 |
| 190 | Ruddal Carte and Co. Bohemian Piccolo in original fitted case | £300-£500 |
| 191 | An 18th/19th century Stradivarius style violin in fitted case | £100-£150 |
| 192 | A rare collection of scratch built WW2 warships circa 1941 made by the owners grandfather for his father, tallest 19.5cm (h) (4) | £200-£300 |
| 193 | A set of seven early 20th century miniature enamelled figurines of animals | £30-£50 |

| Lot No. | Description | Estimate |
|----------------|---|-----------------|
| 194 | A set of twenty four brass hand bells with leather handles of various size and range of octaves | £600-£900 |
| 195 | Woodrow of Cornhill gentlemen French silk Top Hat | £30-£50 |
| 196 | Dick Francis first edition signed hardbound books with dust jackets (43) | £500-£800 |
| 197 | A quantity of black and white movie stills of famous actors and actresses of the golden era of Hollywood and beyond from the National Film Stills Library in London, formerley the property of the head projectionist of the Odeon Leicester Square | £100-£150 |
| 198 | A quantity of old Cine super 8 films to include Carousel, Gentlemen Prefer Blondes, Can Can, Elvis Blue Hawaii and GI Blues and Movie Premier programs to include McKennas Gold Sweet Charity and a cinema and TV today World Premier program for A Touch of Class (13) | £50-£80 |
| 199 | A quantity of football programmes to include World Cup 1966 and Arsenal Football Club, all A/F | £60-£90 |
| 200 | A quantity of stamps to include Victorian Penny Black, Reds, Revenue stamps, British Empire and world in five albums | £80-£120 |
| 201 | Robertson Golden Shred marmalade rectangular enamel advertising sign, 36.5 x 16.5cm | £80-£120 |
| 202 | Raleigh The Record Breaker rectangular enamel advertising sign, 25.5 x 20.5cm | £50-£80 |
| 203 | Queen Elizabeth Golden Jubilee 24 coin Sterling silver collection in original fitted case, to include COAs | £800-£1200 |
| 204 | Three GB Sterling silver coins to include two 2003 Britannia 1oz and a 2006 Britannia 1oz with COAs, approx total weight of silver 97.2g | £30-£50 |
| 205 | A quantity of GB Sterling silver coins to include Crowns, Pounds and a two coin 1990 5 pence set, all in original packaging with COAs, approx total weight of silver 123g | £120-£180 |
| 206 | A quantity of pre 1947 GB silver coins | £30-£50 |
| 207 | A quantity of GB commemorative coins to include Sterling silver London 2012 sports collection, 2001 Tiny Treasures uncirculated coin sets, QEII The Gillick Portrait collection (excluding sovereigns) all with COA and a 1 Mark Notgeld | £30-£50 |
| 208 | A quantity of GB bank notes to include Kentfield £50, Fforde £5, Gill £5, O'Brein £1, Page £1 and Somerset £1 (26) | £120-£180 |

| Lot No. | Description | Estimate |
|----------------|--|-----------------|
| 209 | Bank of China Hong Kong Dollar Note Issuance Souvenir Booklet 1994.5.1. presentation album to include five denominations HK\$1000, HK\$500, HK\$100, HK\$50 and HK\$20, each note bears identical serial number 083262 to include COAs | £120-£180 |
| 210 | An original Art Deco smokers compendium stand with a Bakelite shelf, match holder and cigarette dispenser/ashtray 72 x 41 x 18cm | £100-£150 |
| 211 | Three vintage Dunhill cigarette lighters | £70-£100 |
| 212 | A cast metal silvered table lighter in the form of a monkey seated on a set of books holding a scull, A/F, 16cm (h) | £60-£90 |
| 213 | A hallmarked silver toothpick and The Dalvey pocket cup in fitted packaging | £30-£50 |
| 214 | A rectangular mahogany humidor with cedarwood lining, 12 x 27.5 x 23.5cm | £50-£80 |
| 215 | Partagas Lusitanias sealed box of 25 Habana Cuban cigars | £500-£800 |
| 216 | A quantity of cigars to include Partagas, H Upman, Romeo Y Julieta, Montecristo, Gonzalez, La Tropical, Holland Express and King Edward | £150-£200 |
| 217 | Hennessy Paradis cognac 40% vol 70 cl bottle in original fitted packaging | £700-£1000 |
| 218 | Remy Martin Fine Champagne Cognac 70 proof, Remy Martin Fine Champagne Cognac VSOP 70cl and 94.6cl (3) | £70-£100 |
| 219 | Two bottles of Martell Medaillon cognac 68cl and a bottle of Gaston de Lagrange Champagne cognac 68cl (3) | £70-£100 |
| 220 | Remy Martin Fine Champagne Cognac VSOP I litre in original packaging, Hennessy Cognac 1 litre and Johnnie Walker Black Label Old Scotch Whisky in original packaging (3) | £70-£100 |
| 221 | A quantity of alcohol to include whisky and liqueur (5) | £60-£90 |
| 222 | Dimple Haig Scotch whisky in original packaging | £80-£120 |
| 223 | Berry Bros and Rudd Smith Glenlivet 1961 Scotch whisky bottled 1978, 75 proof, 75.7cl | £500-£800 |
| 224 | First Cask 23 year old Glen Garioch Distillery Speyside Single Malt Cask No. 2758, bottle number 181, distilled on 9th April 1990 | £120-£180 |
| 225 | Taylors 1994 late bottled vintage port 75cl and Dows Midnight port 75cl | £50-£80 |

Lot No.

Description

Estimate

Clocks & Watches

- 226 An early 19th century mahogany cased long case clock by H. Ward and Sons of Liverpool, two train movement, white enamel dial, Roman numerals and phases of the moon, key, pendulum and weights included, 235 x 59 x 23cm £300-£500
- 227 A Viennese walnut wall regulator of customary form to include key and pendulum, 90 x 35.5 x 15cm £70-£100
- 228 A French 19th century Ormolu mantle clock with painted panels depicting urns and neo-classical decoration surmounted by an oval urn with angled side handles, all on leaf scroll supports and three spool feet on original shaped oval felt base with four bun feet all within an original glass dome on carved wooden oval base, to include key and pendulum, clock 40cm (h) dome and stand 54.5cm (h) £400-£600
- 229 French 19th century Ormolu rectangular mantle clock, painted dial with Roman numerals, flanked by painted columns all on raised rectangular base with spool supports, to include key and pendulum, 32 x 20 x 14cm £250-£350



Lot 241

| Lot No. | Description | Estimate |
|----------------|--|-----------------|
| 230 | Brockbank and Atkins Regency bracket clock with arched top inlaid brass work two side handles, white enamel dial, Roman numerals and two train movement all on four ball feet, to include key and pendulum A/F, 42.5 x 27.5 x 15.5cm | £150-£200 |
| 231 | Parkinson and Frodsham marine chronometer of customary form with two subsidiary dials, Roman numerals in mahogany and brass bound case to include winding key and case key, 16.5 x 16 x 15.5cm | £250-£350 |
| 232 | L.D. Hobday and Co. of Birmingham railway waiting room clock, white enamel dial with Roman numerals in mahogany frame to include pendulum and key, 40.5 cm (d) | £70-£100 |
| 233 | An Edwardian mahogany cased mantle clock with arched top, satinwood inlay, white enamel dial with Arabic numerals on four bracket feet, 30.5 x 22 x 14.5cm | £80-£120 |
| 234 | A late 19th century marble mantle clock, rectangular architectural form with single train movement, Roman numerals to include key and pendulum, 29 x 22 x 14cm | £70-£100 |
| 235 | An onyx and brass mounted mantle clock of architectural form, white enamel dial with Arabic numerals, two train movement to include pendulum, 25.5 x 25.5 x 13cm | £70-£100 |
| 236 | Scherer of Paris 19th century black marble rectangular mantle clock, white enamel dial with Roman numerals, two train movement, to include pendulum, 35.5 x 31 x 16cm | £80-£120 |
| 237 | A French 19th century gilt metal and marble clock set, the clock with white enamel dial painted with flowers, scrolls and Arabic numerals, two train movement to include vase form garnitures, key and pendulum, clock 39.5cm (h) | £120-£180 |
| 238 | French 19th century gilt metal and white marble clock set with candelabra garnitures, white enamel dial with Arabic numerals to include key and pendulum, clock 40cm (h) | £120-£180 |
| 239 | A French 19th century ormolu and champlevé mantle clock, the white enamel dial with Arabic numerals supported by putti, mounted on a stepped square white marble base and two matching vase form garnitures clock 24cm (h) | £300-£500 |
| 240 | Zenith miniature desk clock with champlevé decoration, in original case, 6.5cm (h), case 8.5 x 8.5 x 6cm | £80-£120 |
| 241 | Jaeger LeCoultre brush silvered metal rectangular mantle clock with silvered dial and Roman numerals, 17 x 16 x 6.5cm | £250-£350 |

| Lot No. | Description | Estimate |
|----------------|--|-----------------|
| 242 | An Art Deco style Smith Sectric mantle clock with Roman numerals, 21 x 28 x | £30-£50 |
| 243 | A gilt metal carriage clock with carrying handle, flanked by fluted columns, white enamel dial and Arabic numerals, 15.5cm (h) | £50-£80 |
| 244 | Brass carriage clock of customary form with carrying handle, white enamel dial, Roman numerals, to include key, 14cm (h) | £40-£60 |
| 245 | Brass carriage clock of customary form with carrying handle, white enamel dial, Arabic numerals, to include key, 14cm (h) | £40-£60 |
| 246 | Le Castel rectangular carriage clock flanked by barley twist columns with gilded and enamel dial, Roman numerals, to include original case, 20 x 14.5 x 10cm | £30-£50 |
| 247 | Swiza 8 day rectangular mantle clock with white dial and carrying handle on raised rectangular base, 16 x 12.5 x 4.5cm | £40-£60 |
| 248 | R. Carr framed hallmarked silver mounted quartz desk clock, 16.5 x 13.5cm | £30-£50 |
| 249 | R. Carr framed hallmarked silver mounted quartz desk clock, 19 x 14.5cm | £30-£50 |
| 250 | R. Carr framed hallmarked silver mounted quartz desk clock, 17 x 12cm | £30-£50 |
| 251 | Audemars Piguet 18ct yellow gold gentlemen's wristwatch on articulated integral bracelet, to include original box, A/F, approx total weight 63.2g | £3000-£5000 |
| 252 | Piaget 18ct yellow gold gentlemen's wristwatch with integral articulated bracelet, circa 1960, approx total weight 54.4g | £2000-£3000 |
| 253 | Piaget ladies stainless steel and gold wristwatch on an articulated bracelet | £100-£150 |
| 254 | Omega DeVile quartz gentlemen's wristwatch on original leather strap, to include case and documents | £120-£180 |
| 255 | 9ct yellow gold Smith's ladies wristwatch on a 9ct fancy link bracelet, approx total weight 14.5g | £280-£380 |
| 256 | 9ct gold ladies bracelet wristwatch by Edwards of Glasgow in original case, approx total weight 26.1g | £400-£600 |
| 257 | 18ct yellow gold open face pocket watch by David Bartlett of Maidstone, approx total weight 74.7g | £2000-£3000 |
| 258 | Waltham 9ct gold half hunter pocket watch, approx total weight 93.0g | £1800-£2800 |

| Lot No. | Description | Estimate |
|----------------|---|-----------------|
| 259 | 14ct yellow gold open face pocket watch, Roman numerals and subsidiary seconds dial in original case | £200-£300 |
| 260 | Waltham gold plated pocket watch, white enamel dial with Roman numerals, to include subsidiary seconds dial | £80-£120 |
| 261 | Elgin gold plated pocket watch, the enamel dial with Roman numerals and subsidiary seconds dial | £40-£60 |
| 262 | Gold plated open face pocket watch with white enamel dial, Roman numerals and subsidiary seconds dial | £50-£80 |
| 263 | Gold plated open face pocket watch, white enamel dial, Arabic numerals and subsidiary seconds dial | £40-£60 |
| 264 | A hallmarked silver half hunter pocket watch by The Lancashire Watch Company, white enamel dial, Roman numerals and subsidiary seconds dial | £40-£60 |
| 265 | The Acme Swiss made white metal stamped 935 open face pocket watch retailed by H. Samuel with white enamel dial and Roman numerals, A/F | £30-£50 |
| 266 | Accurist gentlemen's mid 20th century wristwatch on a leather strap, to include original purchase receipt | £40-£60 |
| 267 | F. Danton and Co. pocket barometer of customary form | £50-£80 |

Jewellery

| | | |
|-----|--|-----------|
| 268 | A quantity of costume jewellery and gentlemen's wristwatches to include pendants and chains | £70-£100 |
| 269 | A quantity of white metal and costume jewellery to include earrings, bangles, rings and bracelets | £120-£180 |
| 270 | A quantity of costume jewellery to include necklaces, earrings, pendants, amber beads and brooches | £80-£120 |
| 271 | A quantity of costume jewellery to include necklaces, earrings, pendants and brooches | £80-£120 |
| 272 | A quantity of costume jewellery to include earrings, pendants and necklaces | £50-£80 |
| 273 | A quantity of white metal jewellery to include six bangles, a bracelet and matching earrings | £100-£150 |
| 274 | A quantity of Amber jewellery to include a pendant on a chain, a bracelet, a ring and two pairs of earrings, approx total weight 85.2g | £120-£180 |
| 275 | A strand of cultured pearls with a gold clasp | £70-£100 |

| Lot No. | Description | Estimate |
|----------------|---|-----------------|
| 276 | A 19th century micro-mosaic brooch of Saint Peters in Rome set within a filigree gold frame A/F and two matching micro-mosaic earrings depicting The Colosseum and The Pantheon | £300-£500 |
| 277 | A carved Cameo brooch set in a 9ct yellow gold frame | £80-£120 |
| 278 | Cartier 18ct white gold love pendant with two diamonds on a double strand chain, to include box and certificate DPR873 | £1800-£2800 |
| 279 | 14ct yellow gold and diamond bangle set with thirteen diamonds, approx total weight 9.4g | £500-£800 |
| 280 | 14ct white gold and diamond dress ring, approx total weight 3.2g | £400-£600 |
| 281 | 14ct yellow gold, amethyst and diamond cocktail ring, approx total weight 9.4g | £700-£1000 |
| 282 | 18ct yellow gold, sapphire and diamond dress ring, approx total weight 3.5g | £320-£520 |
| 283 | Art Deco 18ct gold and platinum, sapphire and diamond dress ring, approx total weight 2.3g | £320-£520 |
| 284 | 18ct white gold and diamond dress ring, approx total weight 2.1g | £150-£200 |
| 285 | 18ct gold five stone diamond ring, approx total weight 2.6g | £300-£500 |
| 286 | 9ct white gold and diamond eternity ring, approx total weight 2.1g | £150-£200 |
| 287 | 14ct white gold diamond and coloured stone ring, approx total weight 4.2g | £250-£350 |
| 288 | 9ct gold and clear stone dress ring, approx total weight 6.6g | £80-£120 |
| 289 | A platinum and tourmaline dress ring and a platinum and diamond eternity ring | £120-£180 |
| 290 | 14ct yellow gold and coloured stone fold over ring (two in one), approx total weight 4.9g | £350-£550 |
| 291 | Victorian 15ct yellow gold, aquamarine and seed pearl bar brooch, approx total weight 2.8g | £180-£280 |
| 292 | 9ct yellow and white gold antique brooch set with seed pearls, approx total weight 2.4g | £100-£150 |
| 293 | 9ct yellow and white gold bar brooch set with an aquamarine, approx total weight 1.8g | £50-£80 |
| 294 | An Edwardian 9ct yellow gold tourmaline and seed pearl brooch, approx total weight 9.9g | £320-£520 |
| 295 | Victorian floral brooch set with old cut diamonds | £80-£120 |

| Lot No. | Description | Estimate |
|----------------|---|-----------------|
| 296 | A pair of 9ct yellow gold and diamond hoop earrings, approx total weight 2.6g | £100-£150 |
| 297 | Pair of white gold, diamond and rock crystal earrings | £150-£200 |
| 298 | Samson Morden & Co. gold propelling pencil, approx total weight 12.5g, tested | £400-£600 |
| 299 | A yellow gold pendant necklace, tested 22ct, approx total weight 11.8g | £1000-£1500 |
| 300 | 9ct gold Albert chain with fob pendant, approx total weight 53.8g | £1700-£2200 |
| 301 | 9ct yellow gold Albert chain, approx total weight 20.2g | £800-£1200 |
| 302 | 9ct yellow gold rope twist necklace, approx total weight 13.6g | £350-£550 |
| 303 | 14ct gold and diamond pendant on a 9ct white gold chain, approx total weight 6.5g | £320-£520 |
| 304 | 9ct yellow gold ruby and diamond pendant on a 9ct gold chain, approx total weight 3.2g | £150-£200 |
| 305 | 9ct yellow gold charm bracelet with fifteen charms and a padlock clasp, approx total weight 50.5g | £1500-£2000 |
| 306 | 9ct yellow fancy link bracelet, approx total weight 2.3g | £80-£120 |
| 307 | 1793 George III Spade Guinea pendant, approx total weight 8.7g | £700-£1000 |
| 308 | A pair of half sovereign gold coin cufflinks set in 9ct gold, | £700-£1000 |
| 309 | 1914 George V half sovereign set in 9ct gold ring, approx total weight 12.4g | £500-£800 |
| 310 | 1915 George V half sovereign set in a 9ct gold pendant, approx total weight 8.7g | £400-£600 |
| 311 | A pair of 1915 George V half sovereigns set in 9ct gold earrings, approx total weight 16.9g | £800-£1200 |
| 312 | 1979 QEII sovereign in original fitted case | £600-£900 |
| 313 | 1980 QEII proof gold sovereign in fitted case | £600-£900 |
| 314 | 1981 QEII proof gold sovereign in fitted case | £600-£900 |
| 315 | 1980 QEII proof gold half sovereign in fitted case | £300-£500 |
| 316 | 1990 QEII proof gold half sovereign in fitted case | £300-£500 |
| 317 | 1911 George V quarter gold sovereign | £120-£180 |
| 318 | 2009 QEII quarter gold sovereign in plastic capsule, | £120-£180 |
| 319 | Iranian quarter Pahlavi gold coin, approx total weight 2.1g | £180-£280 |

| Lot No. | Description | Estimate |
|----------------------------------|--|-------------|
| Silver & Silver Plate | | |
| 320 | A pair of hallmarked silver table candlesticks , florally chased knopped stems, the raised circular base on pierced vine supports, London 1918, 35cm (h), approx total weight 780g | £700-£1000 |
| 321 | A pair of hallmarked silver Corinthian column table candlesticks, fluted stems on stepped square bases with beaded borders, Birmingham 1959, 31cm (h) | £250-£350 |
| 322 | A pair of hallmarked silver table candlesticks, fluted tapering stems, vase form nozzles on raised oval bases, Birmingham 1902, 30cm (h) | £300-£500 |
| 323 | A pair of hallmarked silver table candlesticks tapering cylindrical stems on raised hexagonal bases, Birmingham 1972, 17cm (h) | £100-£150 |
| 324 | A hallmarked silver table candlestick of knopped cylindrical stem, London 1921, 28cm (h) | £150-£200 |
| 325 | A hallmarked silver four piece teaset, rounded rectangular with beaded borders and scroll handles, Sheffield 1935 hot water jug 1959 by Edward Viner, approx total weight 1963g | £2000-£3000 |
| 326 | Hallmarked silver mug with presentation engraving, Sheffield 1973, approx total weight 357g | £350-£550 |
| 327 | A hallmarked silver fruit stand on raised circular base with pierced sides and gadrooned border, Birmingham 1912, approx total weight 164g | £150-£200 |



| Lot No. | Description | Estimate |
|---------|---|-----------|
| 328 | Four hallmarked silver and white metal Kiddush cups, approx total weight of silver 208g | £200-£300 |
| 329 | Two hallmarked silver bonbon dishes, approx total weight 84g, one A/F | £80-£120 |
| 330 | A pair of Victorian hallmarked silver spill vases, cylindrical chased with scrolls, flowers and leaves on four raised pierced supports, London 1897, approx total weight 230g | £250-£350 |
| 331 | Three hallmarked silver photograph frames to include an Art Nouveau style hallmarked Birmingham 1904, 1922 and 1932 | £70-£100 |
| 332 | A quantity of hallmarked silver to include a cup, a condiment set, a vase, a matchbox holder and a pair of hair brushes (6) | £280-£380 |
| 333 | A quantity of hallmarked silver to include a toast rack, three napkin rings, a mustard pot with blue glass liner, condiment spoon and a bracelet (7) | £280-£380 |
| 334 | A quantity of hallmarked silver and white metal to include two hinged pill boxes, a filigree circular pill box, a corkscrew and a magnifying glass (5) | £100-£150 |
| 335 | A hallmarked silver mesh ladies evening bag, London 1916 | £120-£180 |
| 336 | A hallmarked silver engine turned cigarette case and a 1977 Sterling silver Crown in fitted case | £120-£180 |
| 337 | A Chinese white metal snuff box circa 1880 signed to the hinged cover, approx total weight 44g | £50-£80 |
| 338 | A hallmarked silver nail buffer, Birmingham 1906 | £30-£50 |
| 339 | A quantity of hallmarked silver and white metal to include grape scissors, condiments and a white metal filigree box (4) | £120-£180 |
| 340 | A cased set of hallmarked silver grapefruit spoons, Sheffield 1924, approx total weight 138g | £120-£180 |
| 341 | A cased set of Mappin and Webb polychromatic enamel and hallmarked silver coffee spoons, Birmingham 1973 | £80-£120 |
| 342 | A cased set of hallmarked silver napkin rings, Chester 1903, approx total weight 115g | £120-£180 |
| 343 | Two Victorian hallmarked silver fiddle pattern condiment spoons and a pair of Victorian fiddle pattern sugar tongs, approx total weight 76g | £80-£120 |
| 344 | Mappin and Webb hallmarked silver bonbon dish in the form of a double bass, Birmingham 1905, approx total weight 95g | £100-£150 |
| 345 | A quantity of hallmarked silver tea and coffee spoons, approx total weight 198g (14) | £200-£300 |

| Lot No. | Description | Estimate |
|----------------|--|-----------------|
| 346 | A quantity of hallmarked silver and white metal to include teaspoons and a pair of sugar tongs (9) | £120-£180 |
| 347 | Three pairs of hallmarked silver and Mother of Pearl fruit eaters and an extra knife, Sheffield 1951 | £50-£80 |
| 348 | A cased set of continental white metal salts with glass liners and condiment spoons | £70-£100 |
| 349 | A pair of Egyptian white metal coasters, each 8.5cm (d) | £50-£80 |
| 350 | A white metal filigree model of a Dhow mounted on an oval wooden plinth | £40-£60 |
| 351 | Two white metal figurines of children playing musical instruments and a white metal and glass figurine of a clown (3) | £40-£60 |
| 352 | A white metal stamped 925 four piece dressing table set to include a hand mirror, a hair brush, a clothes brush and a comb (4) | £50-£80 |
| 353 | Five white metal paperweights in the form of two horseshoes, two leaves and a parcel with a bow, stamped 925 | £30-£50 |
| 354 | A silver plated coffee pot on stand, tapering cylindrical, gadrooned borders, angled spout and domed hinged cover to include burner with bar pierced sides, 41.5cm (h) | £40-£60 |
| 355 | A canteen of rattail pattern silver plated flatware for twelve place settings | £80-£120 |
| 356 | Mappin and Webb twelve place canteen of fish eaters | £80-£120 |
| 357 | A quantity of Kings pattern silver plated flatware to include knives, forks, spoons, fish eaters and serving spoons | £80-£120 |
| 358 | A quantity of silver plated flatware for twelve place settings to include fish eaters | £50-£80 |
| 359 | A quantity of Kings pattern silver plated flatware to include knives, forks, spoons and soup spoons | £80-£120 |
| 360 | Mappin and Webb silver plated flatware to include knives, forks, spoons and soup spoons | £70-£100 |
| 361 | A quantity of silver plate to include candlesticks, tea kettle on stand, cake stands, fruit bowls and flatware | £70-£100 |
| 362 | A quantity of silver plate to include candle sticks, trays, dishes, condiments and a teapot | £100-£150 |
| 363 | A quantity of silver plate to include fruit bowls, roll baskets, a cake stand, an entrée dish and cover, trays and flatware | £100-£150 |
| 364 | A quantity of silver plate to include a sugar dredger, a coffee pot, a pair of sugar nips, condiments, bonbon dishes and flatware | £100-£150 |

Notes

We are pleased to offer online bidding via
www.easyliveauction.com and www.the-saleroom.com
The live auction will allow you watch the sale as it happens
in real time and listen to the auctioneer via a live audio feed.

To view the catalogue and register for the sale please logon to
www.the-saleroom.com/busheyauctions
or www.easyliveauction.com/busheyauctions
Please note our online bidding terms and conditions

In addition to this service we offer
absentee/commission and telephone bids
Please contact Richard or Linda for further information
020 8386 2552 or 07504 201202



the-saleroom.com

Valuation Days

Friday 24th April, 1st and 15th May
9am to 5pm at our Watford showroom
Unit 9 Shakespeare Industrial Estate
Watford
WD24 5RR

**Please call or email to book an appointment
or a home visit on any other day
NOW ACCEPTING ENTRIES**

tel: 020 8386 2552
mobile: 07504 201202
e-mail: enquiries@busheyauctions.com

Next Auction Date

11th June

Fine Art, Antiques, Collectables,
Jewellery and Silver

**Please check the website for confirmation
and viewing times
www.busheyauctions.com**



Lot 40

BUSHEY Auctions

tel: 0208 386 2552

mobile: 07504 201202

email: enquiries@busheyauctions.com

visit our website

www.busheyauctions.com